

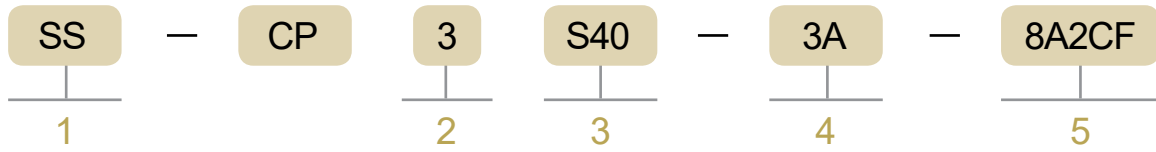
Condensate Pot



CP SERIES

- T-LOK ended outlets
- Simple maintenance design
- Variety of connections available

ORDERING INFORMATION



1. MATERIAL

Material	Designator
A312 TP316	SS
A312 TP316L	S
A312 TP304	4S
A312 TP304L	4L
A106 Gr. B	CB
A335 P11	P11
A335 P22	P22

2. PIPE DESIGNATOR

	Pipe Size	Designator
ANSI	NPS 3 (O.D. 88.9)	3
	NPS 4 (O.D. 114.3)	4
JIS	80A (O.D. 89.1)	J3
	100A (O.D. 114.3)	J4

3. CLASS DESIGNATOR OF PIPE

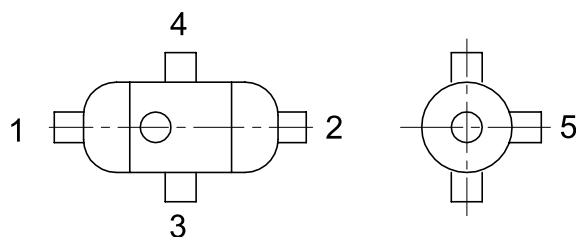
Pipe Size	Designator
Sch. 40	S40
Sch. 80	S80
Sch. 160	S160
Sch. XXS	XX

4. SHAPES DESIGNATOR

Shapes	Designator	Shapes	Designator	Shapes	Designator	Shapes	Designator
	2A		3A		4A		5A
	2B		3B		4B		5B
	2C		3C		4C		5C
	2D		3D		4D		5D
	2E		3E		4E		5E

* If you need other shapes except specified shapes above, please do not hesitate to contact.

5. END CONNECTION DESIGNATOR



Size	Designator	Size	Designator
1/8	2	1/2	8
1/4	4	3/4	12
3/8	6	1	16

End Connection	Designator	End Connection	Designator
Female NPT	A	Hex. Head Plug	E
Female PT	B	T-LOK	F
Pipe Socket Weld	C	Vent Plug	G

- * If all end connections are the same, size should be written only once.
- * Class of end connection is selected by the pipe schedule.
- * Socket weld connection as per ANSI B16.11
- * Butt welding ends as per ANSI B16.9
- * NPT as per ANSI B1.20.1 taper pipe threads

FEATURES

All condensate pot are designed in accordance with ASME SEC. VIII Div. 1 and produced in an ASME coded workshop.

- Seamless pipe construction.
- Working pressure: up to Class 2500
- Variety of end connections available.
- Extra connections can be furnished upon customer request.
- All threads will be protected with plugs or plastic caps as required by the customer.
- All chamber are factory tested fully prior to shipment.

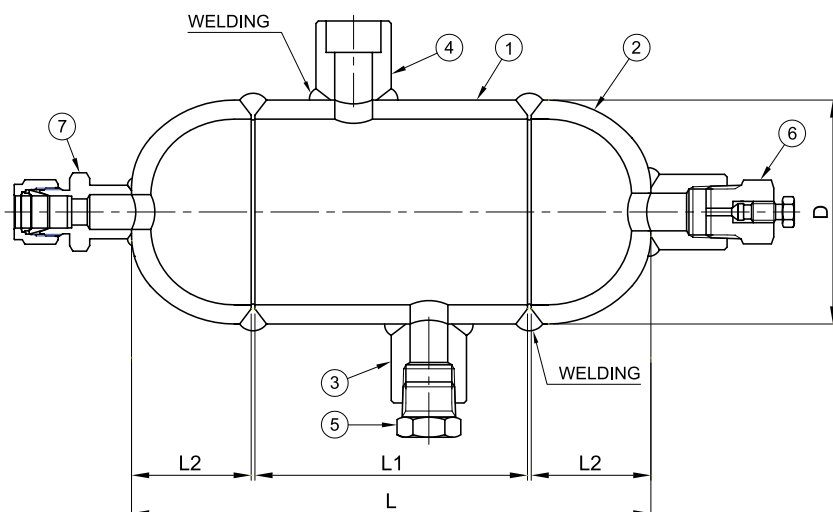
TECHNICAL DATA

- All welding as per ASME SEC. IX.
- All the welding point shall be non-destructive inspection.

* RT : Radiographic Testing

* PT : Liquid Penetrant Testing

* MT : Magnetic Particle Testing



MATERIAL OF CONNECTION

No.	Description	Material
1	Pipe	Refer to Material Table
2	Cap	
3	Half Coupling	Stainless Steel 316/L or Carbon Steel
4	Weld Connector	Stainless Steel 316/L
5	Hex. Plug	Stainless Steel 316/L or Carbon Steel
6	Vent Plug	Stainless Steel 316/L
7	T-LOK	

DIMENSIONS

(Unit: mm)

Pipe Size D	L	L1 ①	L2 ②
NPS 3 (88.9)	214	110	50
NPS 4 (114.3)	360	229	63.5
80A (89.1)	214	110	50
100A (114.3)	360	229	63.5

① L1 length is adjustable according to client request

② L, L2 are changed according to L1.